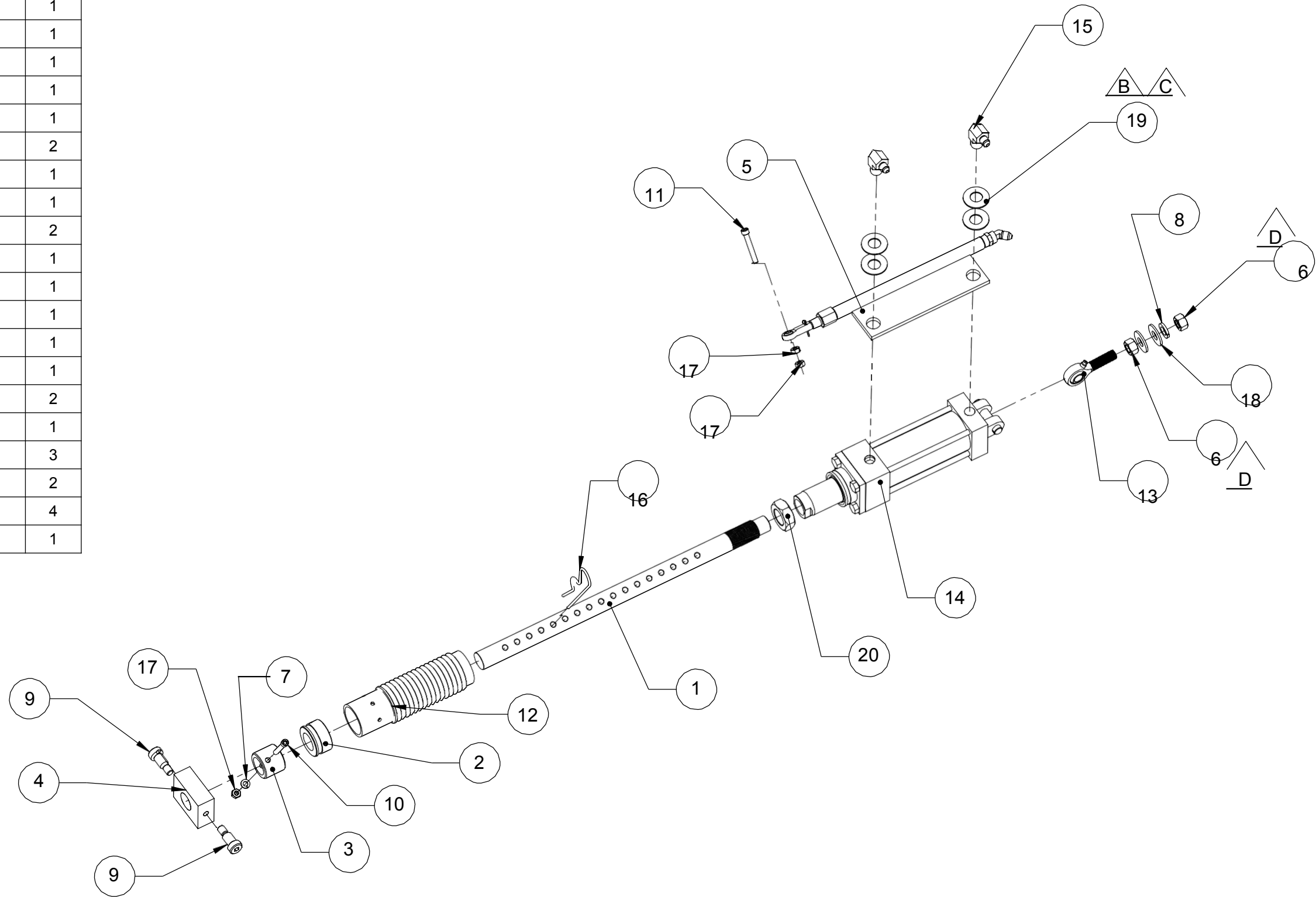


ITEM NO.	PART NUMBER	SAP No	QTY.
1		M13567	1
2		M13568	1
3		M13569	1
4		M14166	1
5			1
6	M16511		2
7	M14138		1
8	M14140		1
9	M23129		2
10	M14492		1
11	M14504		1
12	M14513	M14513	1
13	M14629	M14629	1
14	M15098	M15098	1
15	M15582	M15582	2
16	M16098	M16098	1
17	M16483		3
18	M17649		2
19	M17681	M17681	4
20	M14135		1



ECN	REV	DESCRIPTION	DRAWN	CHECKED	DATE	UNLESS OTHERWISE STATED	TOLERANCE UNLESS	PROPRIETARY AND CONFIDENTIAL		
-	A	RELEASED FOR MANUFACTURING				- ALL SHARP EDGES TO BE GROUND R0.125"	X" ± .5"	THE INFORMATION CONTAINED IN THIS DRAWING IS THE SOLE PROPERTY OF MIE SUPPLY. ANY REPRODUCTION IN PART OR AS A WHOLE WITHOUT THE WRITTEN PERMISSION OF MIE SUPPLY IS PROHIBITED.		
	B					- ALL WELDS IN ACCORDANCE WITH AWS D1.1 and KWS-001	X.X" ± .25"	TITLE: SECONDARY CYLINDER (ASSIST)		
	C					- MARK/STAMP PT. # AND/OR W.O. # ON PARTS	X.XX" ± .125"	DWG. No. _____ REV.: A		
	D					- Q .063	X.XXX" ± .063"	BY: _____ DATE: _____		
	E					MATERIAL	X.XXXX" ± .010"	DRAWN: _____		
						COATING	X° ± 1°	CHECKED: _____		
						N/A	3rd ANGLE PROJECTION	APPROVED: _____		
						DO NOT SCALE ALL DIMENSION IN INCHES		SAP. No: 47192 WT: _____ LBS SHEET 1 OF 1		
I	H	G	F	E	D	C	B	A		

5

4

3

2

1

C:\00ENGR\VAULT\Products\107 - Pipe Cleaning Machine\70 - Mechanical Sub-Assemblies\001-101-005.REVA